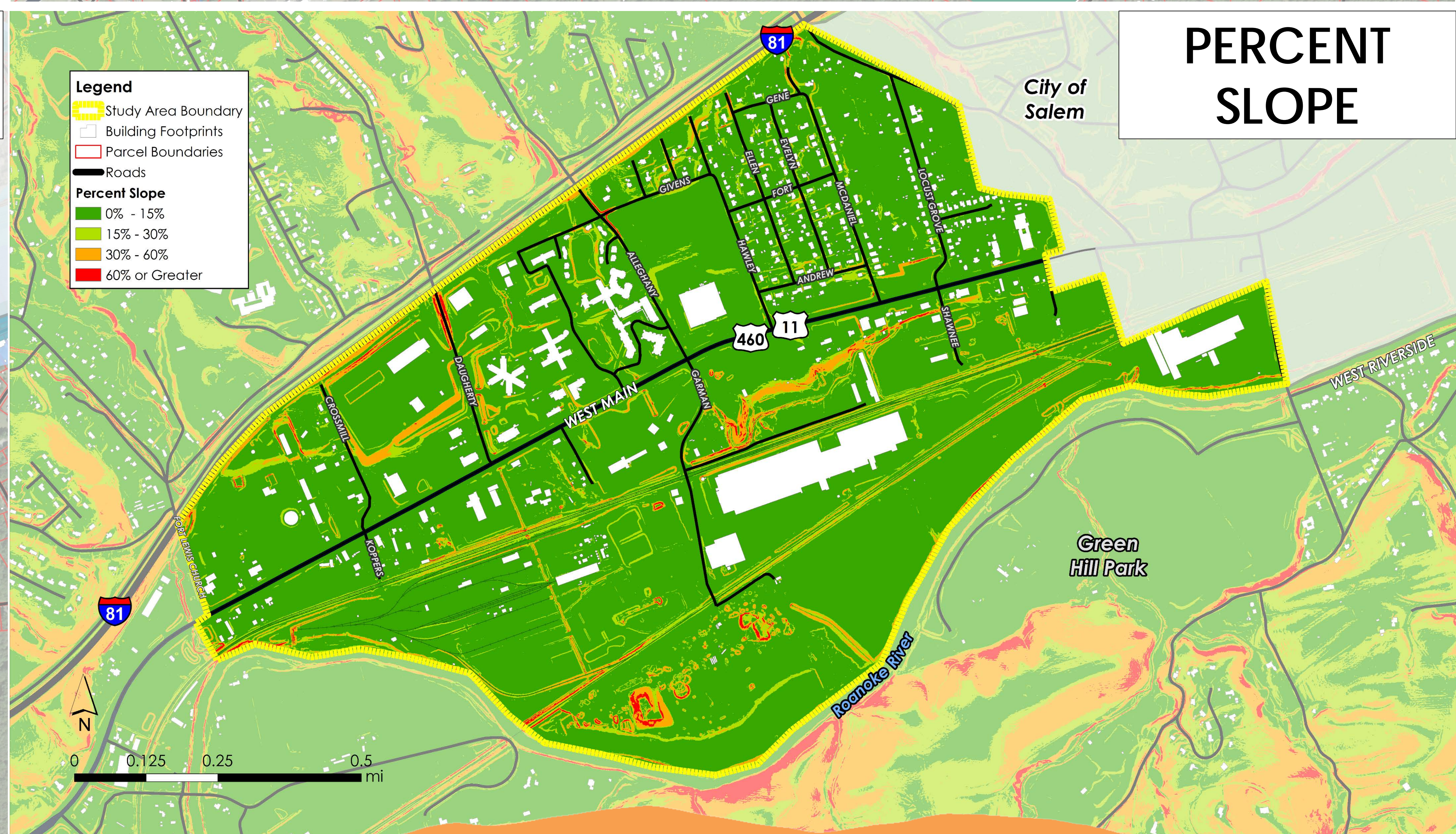
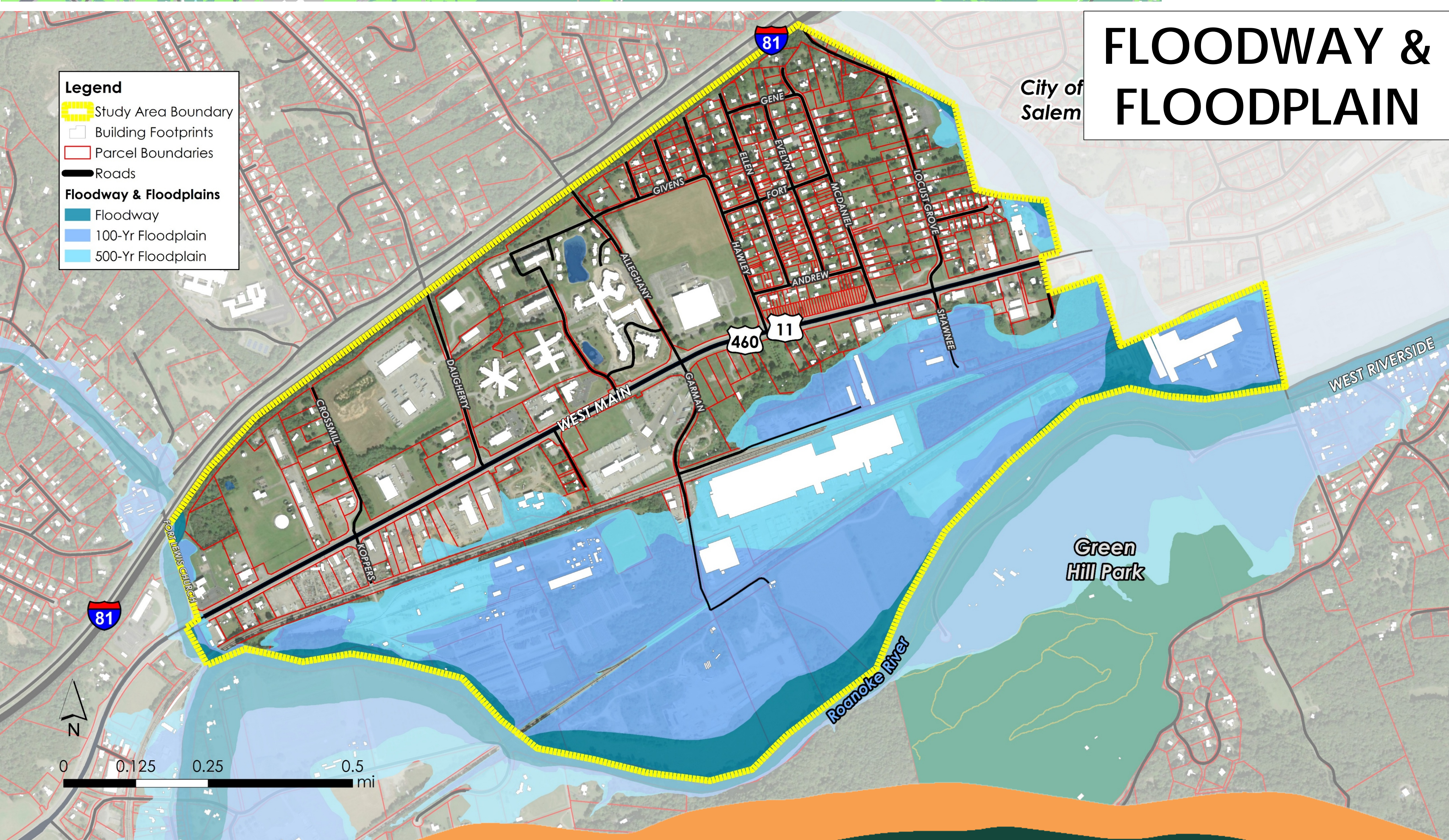
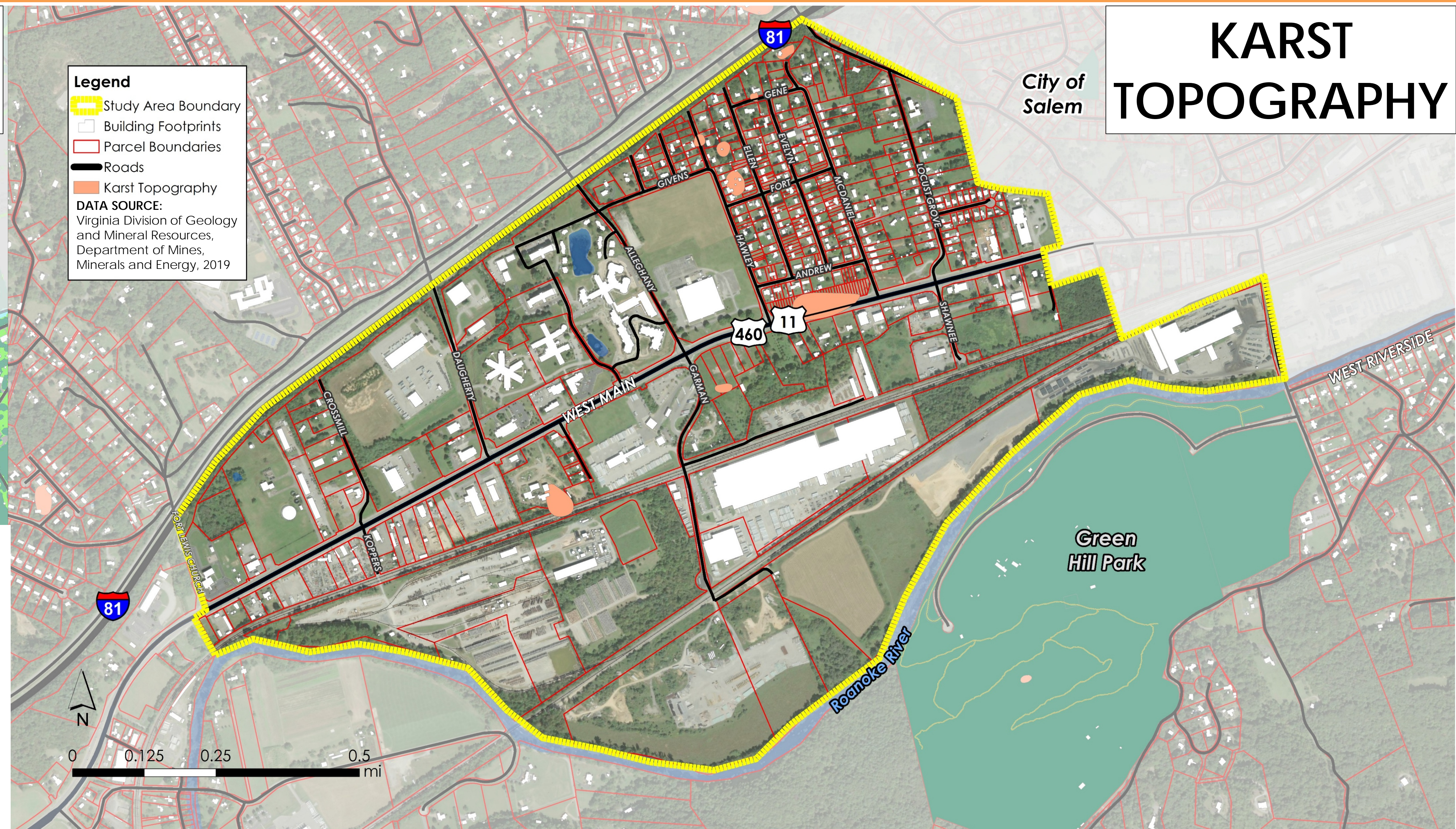
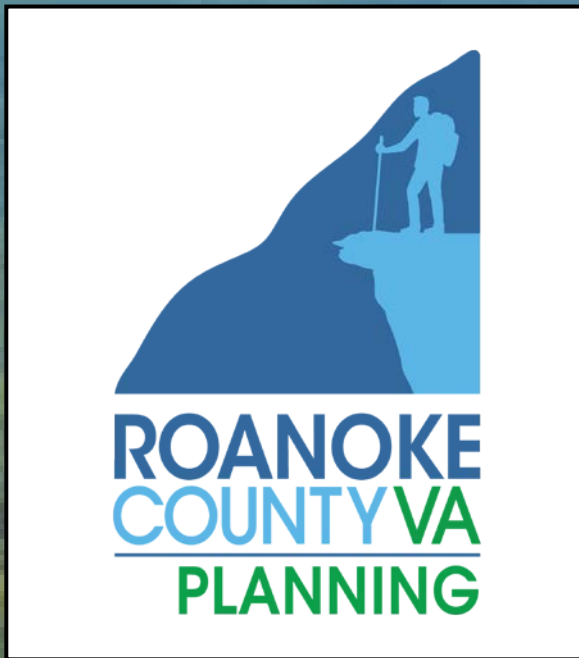




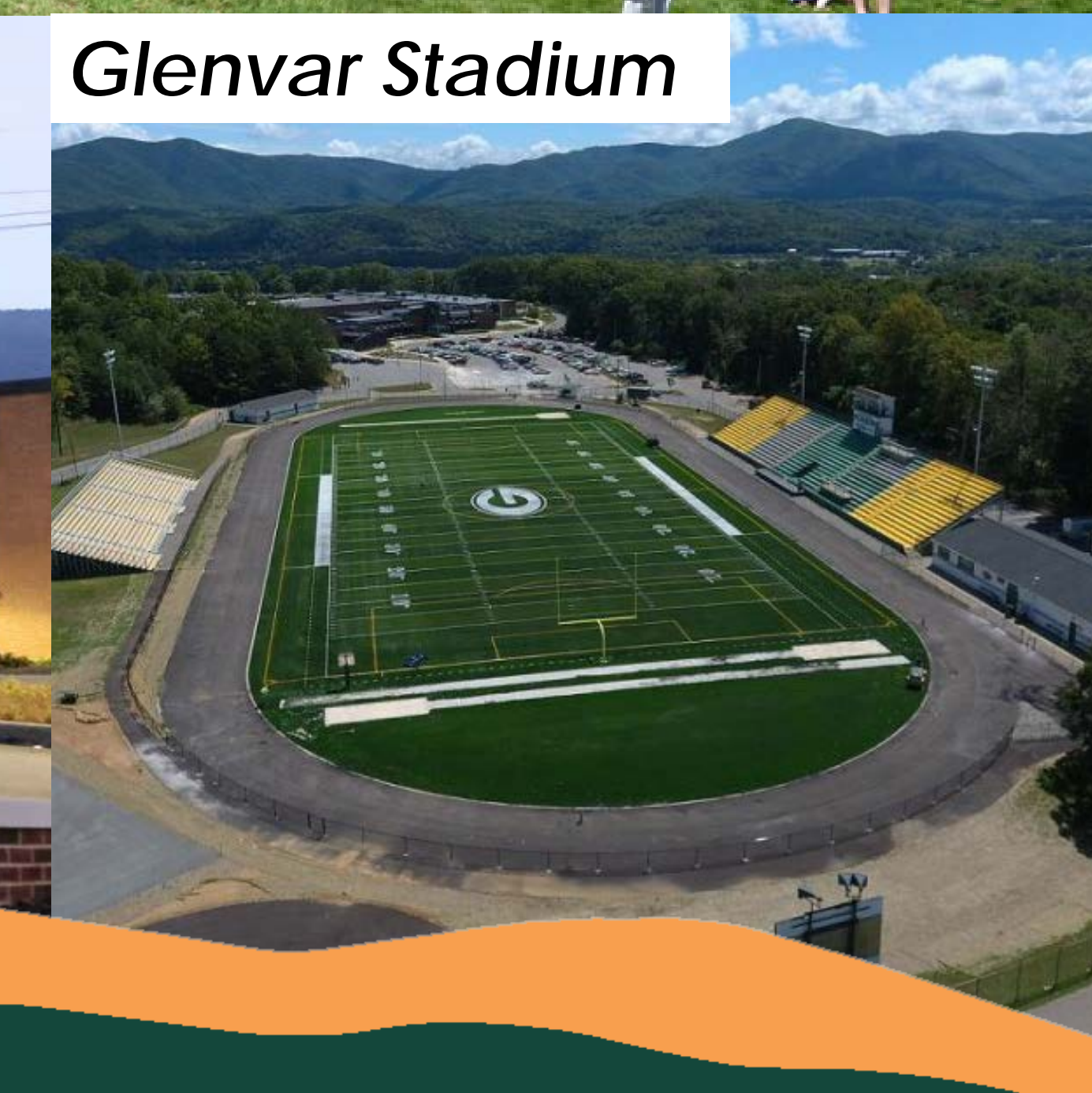
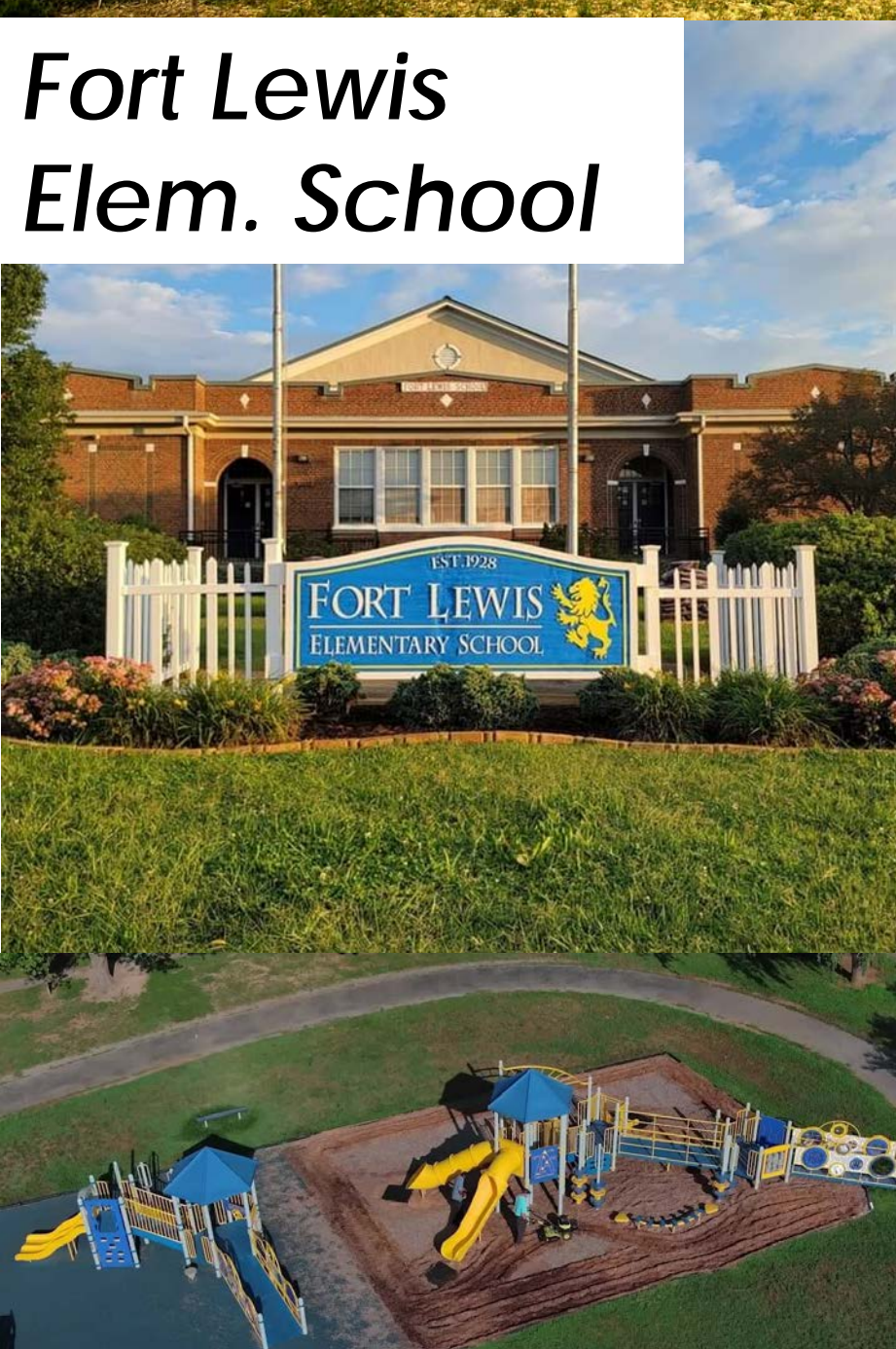
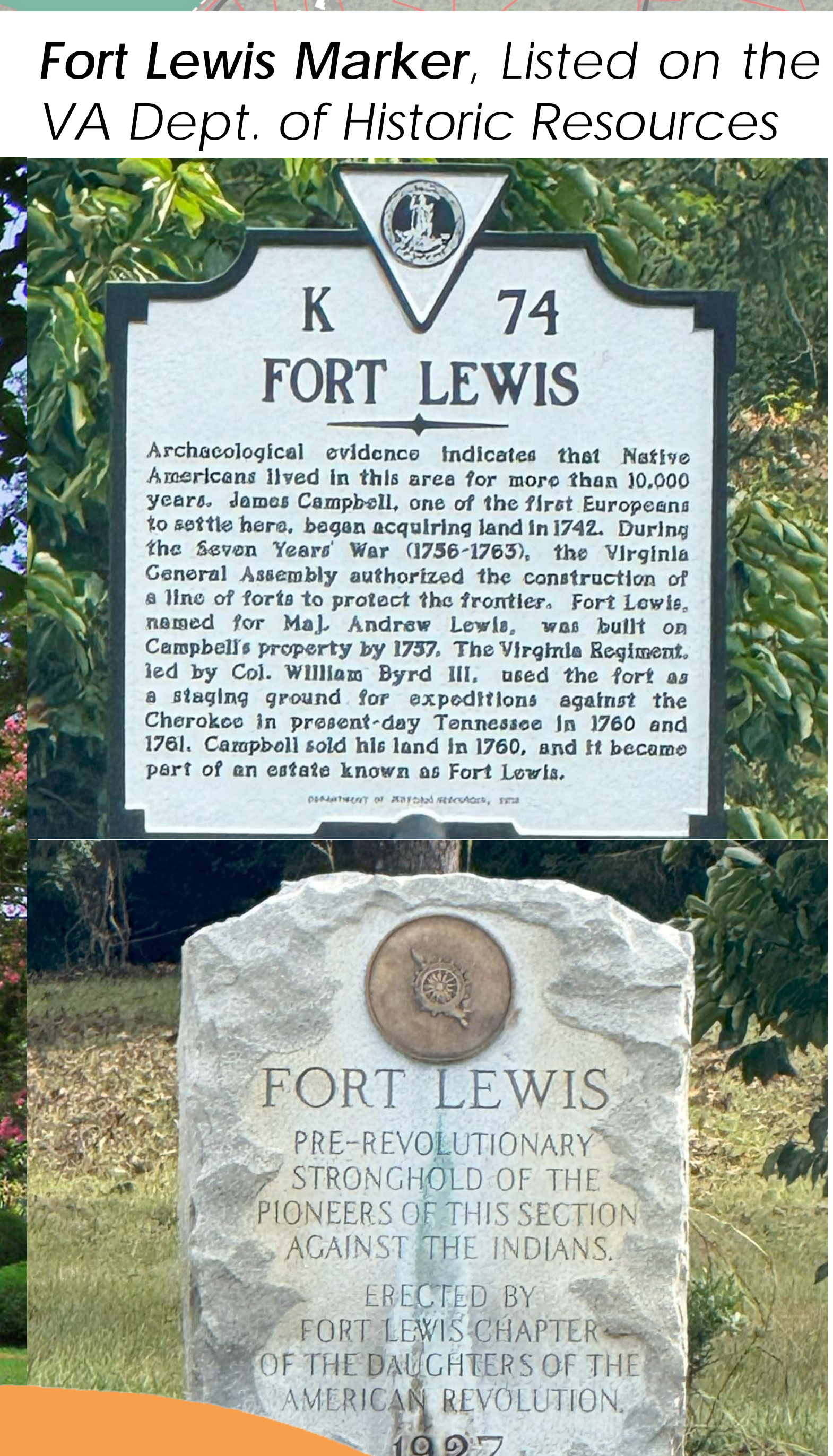
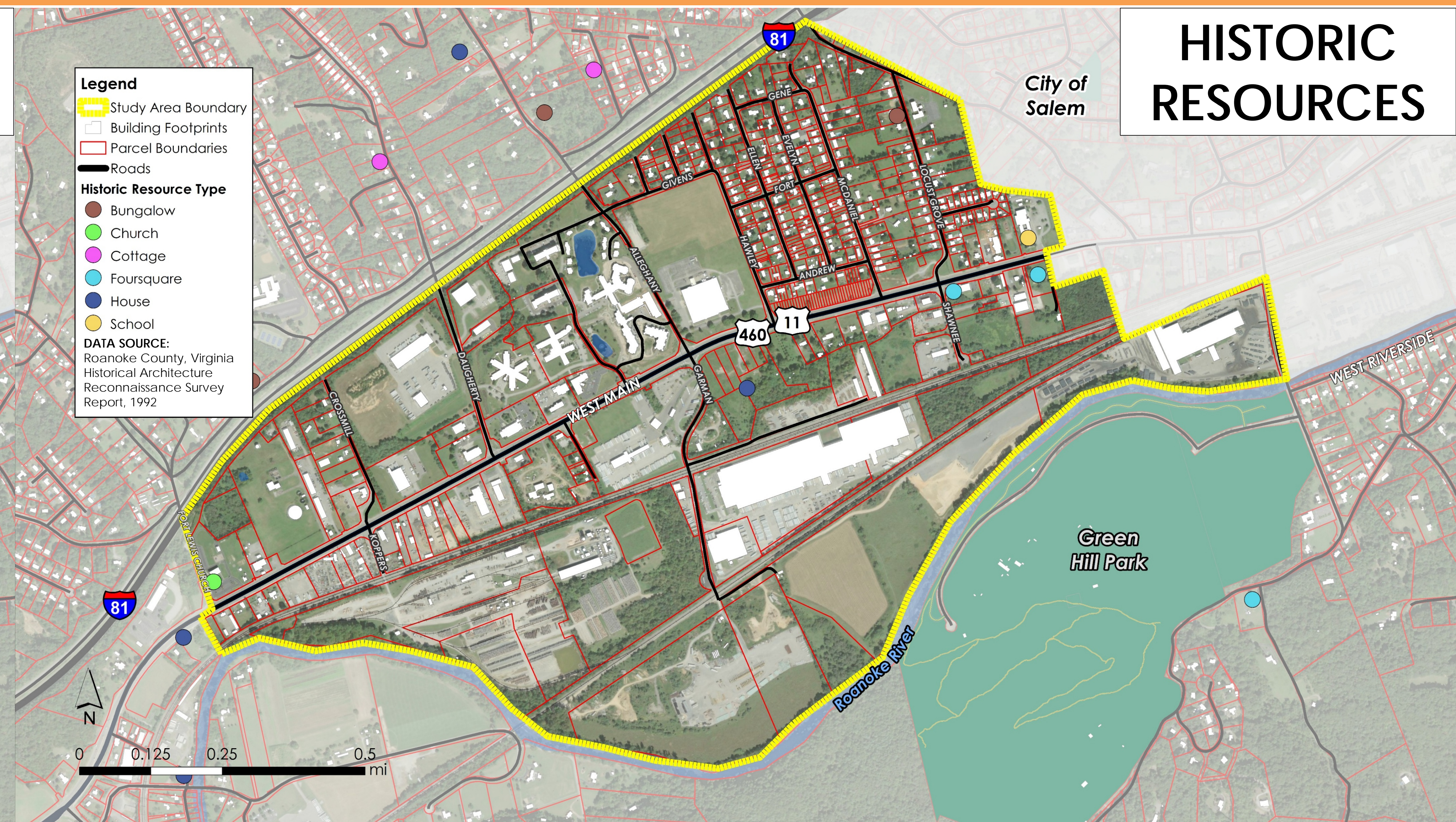
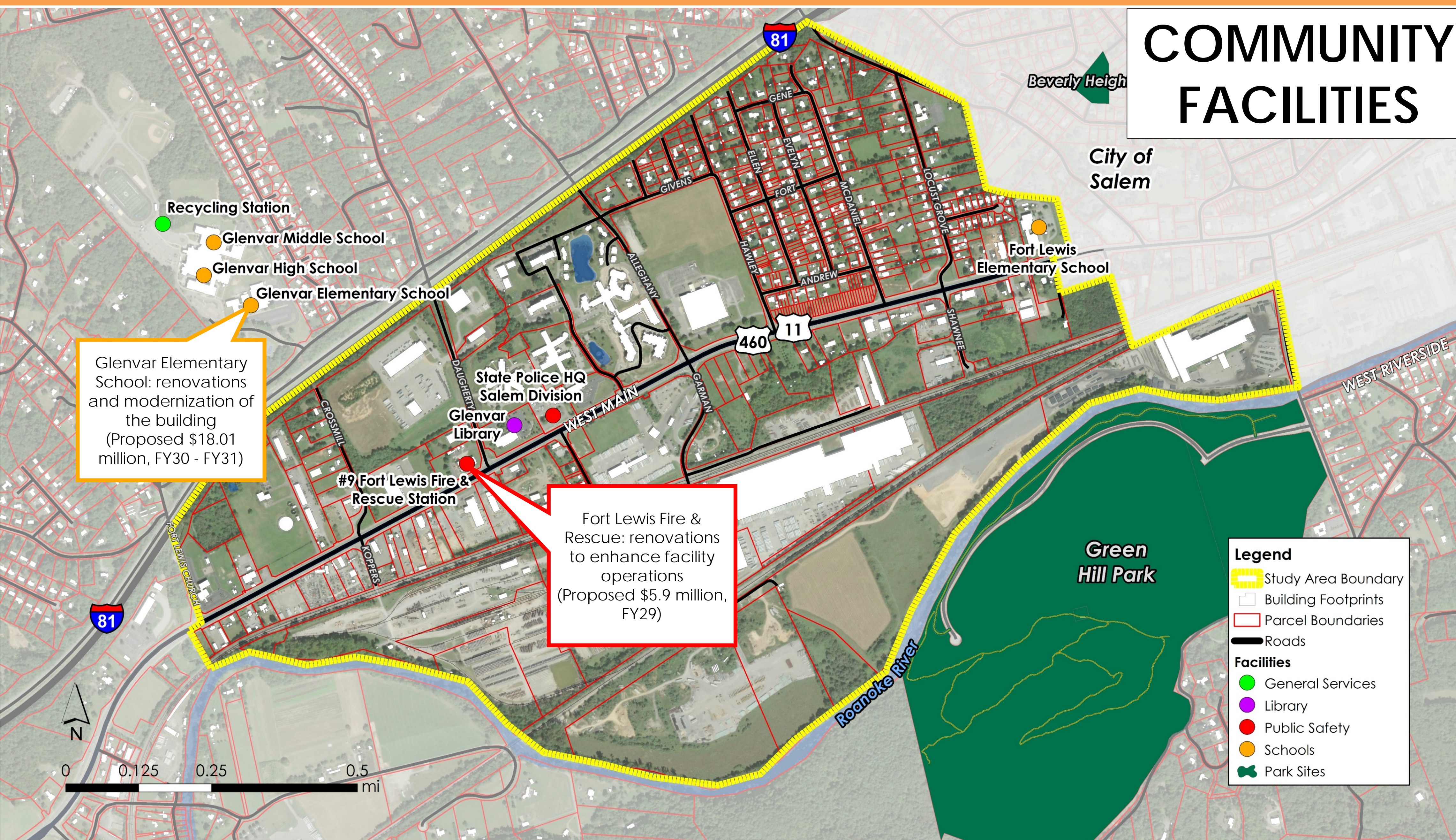
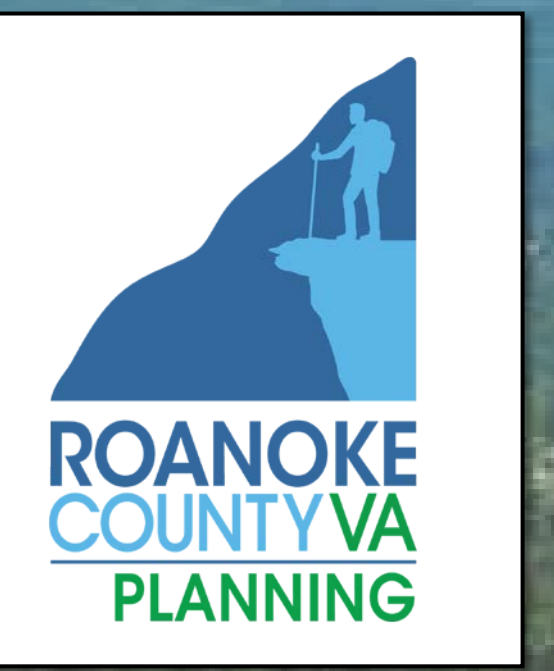
# NATURAL RESOURCES







# COMMUNITY FACILITIES & HISTORIC RESOURCES





# OUTDOOR SPACES

Within the **Glenvar Center Study Area only**, please state whether you support or do not support the following improvements by answering either **YES** or **NO**.

Playground/Picnic Area



River/Blueway Access



Open Lawn/Social Gathering Space



Community Garden



Dog Park



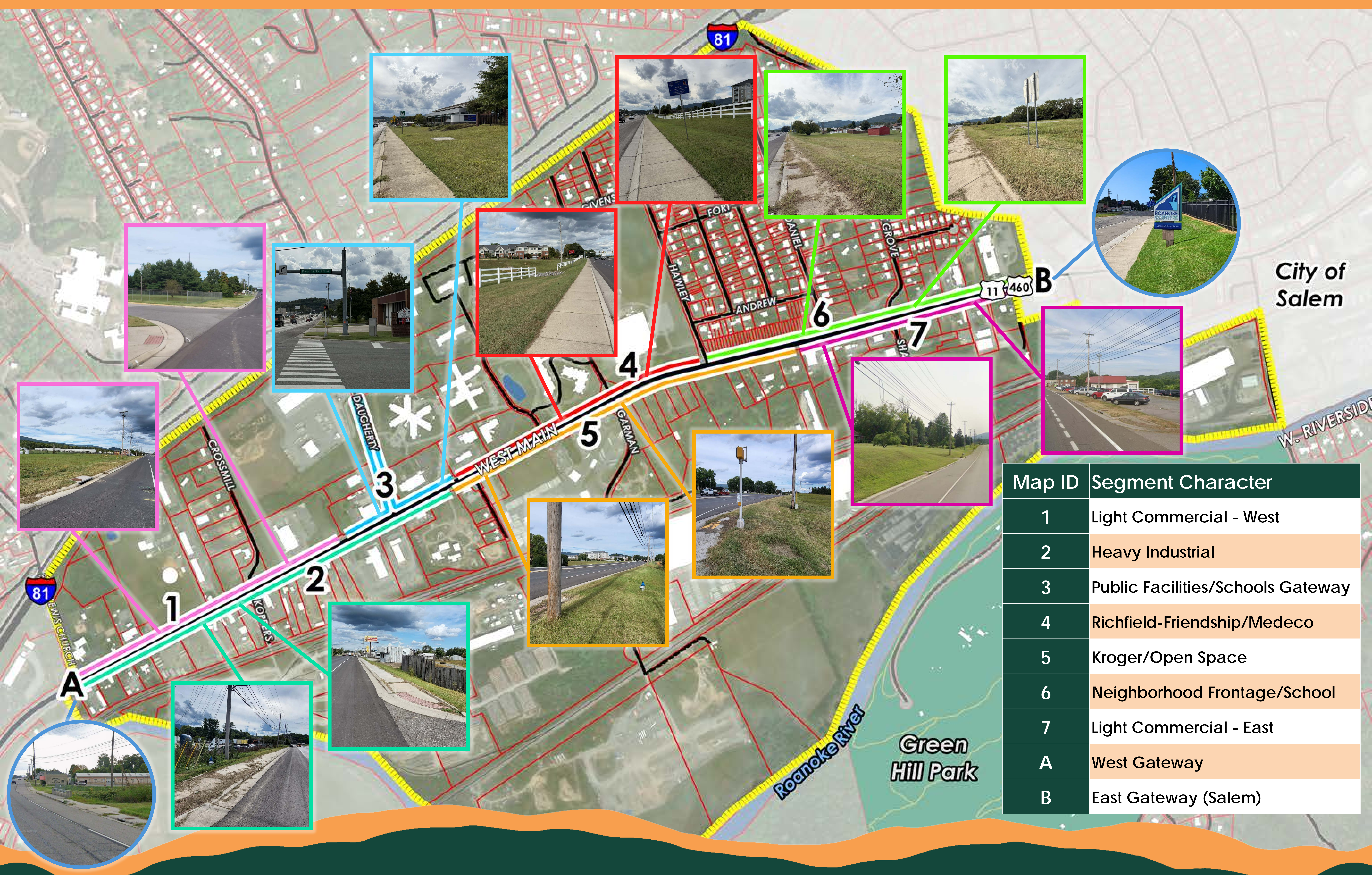
Small-Scale Recreational Sports Facility  
(i.e. pickleball, volleyball, basketball, etc.)







# STREETSCAPE IMPROVEMENTS SEGMENTS



Map ID	Segment Character
1	Light Commercial - West
2	Heavy Industrial
3	Public Facilities/Schools Gateway
4	Richfield-Friendship/Medeco
5	Kroger/Open Space
6	Neighborhood Frontage/School
7	Light Commercial - East
A	West Gateway
B	East Gateway (Salem)



# STREETSCAPE BEAUTIFICATION

Within the **Glenvar Center Study Area only**, please state whether you support or do not support the following improvements by answering either **YES** or **NO**.

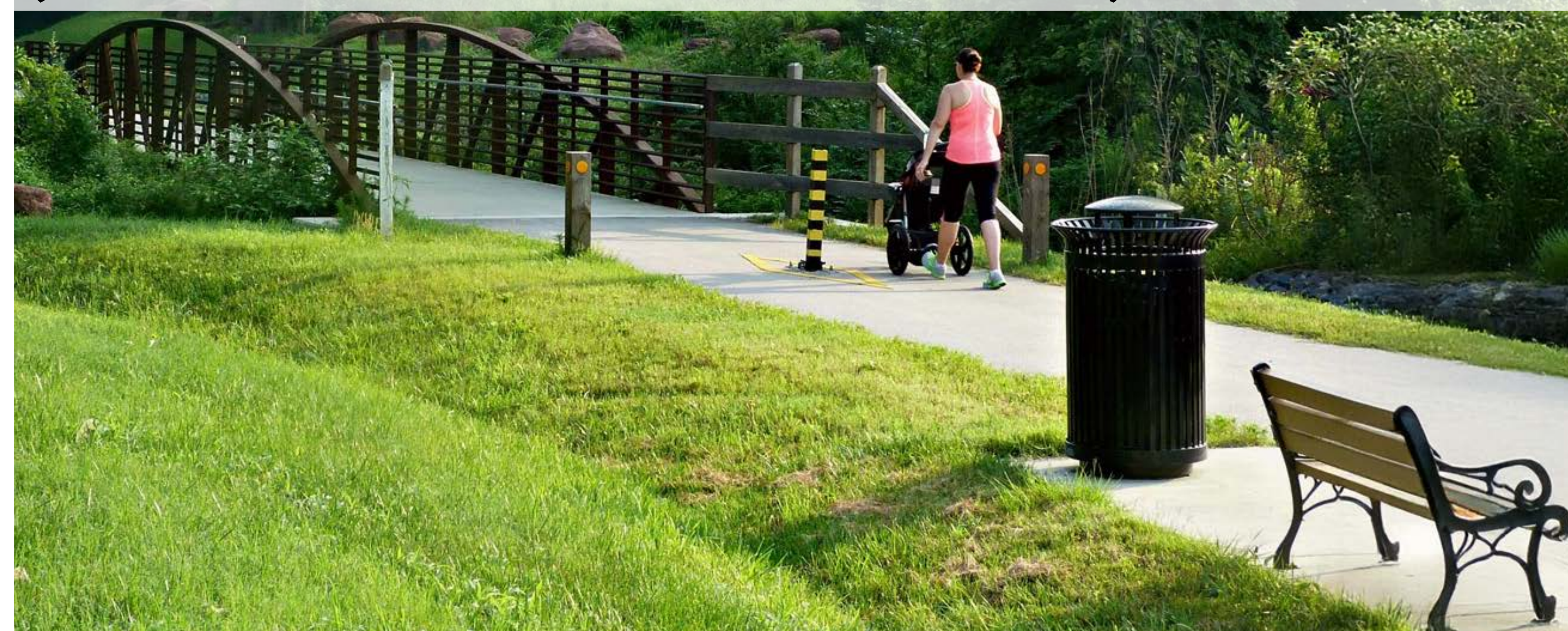
**Pedestrian-Scaled Street Lighting**



**Street Trees**



**Benches & Street Furniture**  
(i.e. Bike Racks, Covered Bus Shelter, etc.)



**Gateway & Wayfinding Signage**



**Landscaping & Screening**



**Public Art & Placemaking Elements**







# DRAFT RECOMMENDATIONS

## Natural & Cultural Resources



- Preserve scenic views of the surrounding mountains
- Evaluate and make improvements for stormwater runoff and flooding issues
- Preserve and promote the historic and cultural resources of the Glenvar community

## Community Facilities



- Encourage the development of appropriately scaled outdoor spaces and parks in the study area
- Continue to evaluate the needs and programs at Green Hill Park
- Explore additional options for recycling
- Improve community services and continue maintaining and enhancing community facilities

## Gateway/Streetscape



- Construct and install gateway and streetscape improvements along Route 11/460/West Main Street
- Ensure the maintenance of landscaping and other streetscape improvements