



County of Roanoke

FINANCE DEPARTMENT PURCHASING DIVISION

Dawn M. Rago, Buyer
5204 Bernard Drive SW, Suite 300 F
Roanoke VA 24018
(540) 283-8150
(540) 561-2827 – Fax
drago@roanokecountyva.gov

February 26, 2018

RFQ #2018- 035 Generator Installation

ADDENDUM NO. 2

Fresh Set of Drawings

Due Date & Time:
March 5, 2018 12:00PM
(Local Prevailing Time)

COUNTY OF ROANOKE

REPLACEMENT GENERATOR PROJECT #1 GREEN RIDGE REC CENTER ROANOKE, VA



ISSUED FOR CONSTRUCTION
SEPTEMBER 07, 2017
100048

Contract Drawings

GENERAL DRAWINGS

DWG. NO.	TITLE
	COVER-INDEX

MECHANICAL DRAWINGS

DWG. NO.	TITLE
M100	MECHANICAL LEGEND AND ABBREVIATIONS
MD101	MECHANICAL DEMOLITION PLAN
M101	MECHANICAL NEW WORK PLAN

ELECTRICAL DRAWINGS

DWG. NO.	TITLE
E001	ELECTRICAL SPECIFICATIONS AND GENERAL NOTES
ED101	DEMOLITION PLAN
E101	NEW WORK PLAN
ED601	DEMOLITION ONE-LINE DIAGRAM
E601	NEW WORK ONE-LINE DIAGRAM

ONE OR TWO CHARACTER DISCIPLINE DESIGNATOR (MAY NOT BE PRESENT IF CALLOUT AND TITLE ARE ON DRAWINGS WITHIN THE SAME DISCIPLINE)

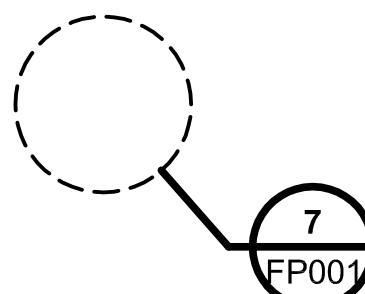
LETTER OR NUMBER DESIGNATOR

DRAWING SEQUENCE NUMBER INDICATES WHERE TITLE IS LOCATED (MAY NOT BE PRESENT IF CALLOUT AND TITLE ARE ON THE SAME DRAWING)

SECTION, DETAIL, AND ELEVATION SYMBOL IDENTIFIERS



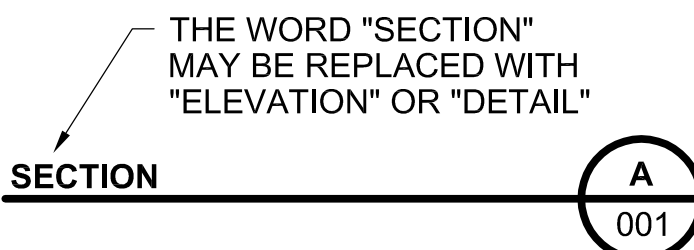
SECTION CALLOUT EXAMPLE



DETAIL CALLOUT EXAMPLE



ELEVATION CALLOUT EXAMPLE



SECTION, DETAIL, OR ELEVATION TITLE EXAMPLE

SECTION, DETAIL, AND ELEVATION IDENTIFICATION SYSTEM

no.	date	by	ckd	description
	09/07/17	KMS	JMR	ISSUED FOR CONSTRUCTION



119 NORFOLK AVE, SW, SUITE 100
ROANOKE, VA 24011
540-759-5100

REPLACEMENT GENERATOR PROJECT #1

COVER-INDEX



GENERAL NOTES:

1. LEGEND IS GENERAL IN NATURE AND MAY INDICATE MORE INFORMATION THAN IS APPLICABLE TO PROJECT. SEE PLANS FOR SPECIFIC SYMBOLS AND ABBREVIATIONS.
2. PROVIDE ALL MATERIALS, VALVES, AND EQUIPMENT AND PERFORM ALL LABOR REQUIRED TO INSTALL COMPLETE AND OPERABLE MECHANICAL SYSTEMS AS INDICATED ON THE DRAWINGS, AS SPECIFIED, AND AS REQUIRED BY CODE.
3. INSTALL ALL MECHANICAL EQUIPMENT AND APPURTENANCES IN ACCORDANCE WITH MANUFACTURERS RECOMMENDATIONS, CONTRACT DOCUMENTS, AND APPLICABLE CODES AND REGULATIONS.
4. COORDINATE CONSTRUCTION OF ALL MECHANICAL WORK WITH OTHER WORK (STRUCTURAL, CIVIL, ELECTRICAL WORK, ETC....) SHOWN ON CONTRACT DOCUMENT DRAWINGS.
5. LOCATE ALL MECHANICAL EQUIPMENT FOR UNOBSTRUCTED ACCESS TO UNIT ACCESS PANELS, CONTROLS, AND VALVES. MAINTAIN UNOBSTRUCTED ALL AREAS AND CLEARANCES INDICATED BY EQUIPMENT MANUFACTURER FOR SERVICE.
6. VERIFY DIMENSIONS AND CONNECTION SIZE WITH FURNISHED EQUIPMENT.
7. ENSURE EQUIPMENT SUPPORTS AND CURBS ARE LEVEL PRIOR TO INSTALLING EQUIPMENT. INSTALL ALL EQUIPMENT LEVEL AND PLUMB UNLESS OTHERWISE INDICATED.

FUEL POLISHING UNIT OPERATIONS:

1. EVERY 60 DAYS (ADJ) OR WHEN MANUALLY ENERGIZED, THE FUEL POLISHING UNIT SHALL TURN-OVER THE ENTIRE VOLUME OF EACH TANK. FILTER THE TANK FOR 6 HOURS (ADJ) CONTINUOUSLY. FUEL POLISHING UNIT OPERATIONS SHALL BE DISABLED IF GENERATOR IS STARTED.

SPECIFICATIONS:

GENERAL:

1. INSTALL AND TEST COMPONENTS IN ACCORDANCE WITH THE NFPA 31 (2016), MANUFACTURERS INSTRUCTIONS, AND APPROVED PRODUCT DATA SUBMITTALS.
2. PIPING MATERIALS SHALL BARE LABEL, STAMP, OR OTHER MARKINGS OF SPECIFIED TESTING.
3. CLEAN INTERIOR OF PIPING, REMOVE DIRT, RUST, AND DEBRIS AS WORK PROGRESSES.
4. PROTECT PIPING DURING REMAINDER OF CONSTRUCTION PERIOD TO AVOID CLOGGING WITH DIRT, RUST, AND DEBRIS AND TO PREVENT DAMAGE FROM TRAFFIC AND CONSTRUCTION WORK.

PIPING:

PROVIDE CARBON STEEL PIPE THAT COMPLIES WITH THE FOLLOWING, ASTM A53/A53M, TYPE E OR S, GRADE B, SEAMLESS OR ELECTRIC WELDED, SCHEDULE 80. END CONNECTIONS FOR PIPE OR FITTINGS SHALL BE FORGED, THREADED END CONNECTIONS, PROVIDE CONNECTIONS THAT CONFORM TO ASME B16.3, CLASS 150 OR ASME B16.11.

VALVES:

PROVIDE VALVES WITH BODIES, BONNETS, AND COVERS CONSTRUCTED OF CAST STEEL CONFORMING TO ASTM A216/A216M.

SWING TYPE CHECK VALVE SHALL BE THE FULL-OPENING, TILTING DISC, NON-SLAM, SWING TYPE THAT CONFORMS TO API SPEC 6D. DISCS AND SEATING RINGS SHALL BE RENEWABLE WITHOUT REMOVING FROM THE LINE. THE DISC SHALL BE GUIDED AND CONTROLLED TO CONTACT THE ENTIRE SEATING SURFACE.

BALL VALVE SHALL BE THE NON-LUBRICATED, DOUBLE SEATED, BALL TYPE THAT CONFORMS TO API SPEC 6D. VALVE SHALL MEET THE FIRE TEST REQUIREMENTS OF API SPEC 6FA. VALVE SHALL OPERATE FROM FULLY OPEN TO FULLY CLOSED WITH 90 DEGREE ROTATION OF THE BALL. VALVE SHALL BE CAPABLE OF 2-WAY SHUTOFF. VALVE BALL SHALL BE CONSTRUCTED OF STAINLESS STEEL. PROVIDE FULL BORE TYPE FOR ALL BALL VALVES.

PIPING ACCESSORIES:

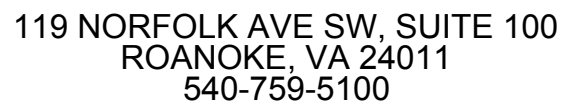
STRAINER SHALL BE THE IN-LINE, CLEANABLE, SIMPLEX BASKET TYPE CONFIGURED IN EITHER AN "S" OR "T" PATTERN. STRAINER BODY SHALL BE FABRICATED OF CAST STEEL OR BRASS. PROVIDE STRAINER WITH A DRAIN AND WITH DRAIN PIPING THAT IS INCLUSIVE OF A BALL VALVE. STRAINER SHALL BE EQUIPPED WITH A REMOVABLE COVER, FLANGED END CONNECTIONS, AN AIR ELIMINATOR, PORTS FOR CONNECTION OF DIFFERENTIAL PRESSURE SENSOR TUBE, AND ARROWS CLEARLY

CAST ON THE STRAINER SIDES THAT INDICATE THE DIRECTION OF FLOW. STRAINERS SHALL HAVE A REMOVABLE, 60 MESH, TYPE 316 STAINLESS STEEL WIRE SEDIMENT SCREEN.

PRESSURE GAUGE SHALL BE THE SINGLE STYLE TYPE THAT CONFORM TO ASME B40.100. GAUGE SHALL HAVE A 4-1/2 INCHES DIAL, A STAINLESS STEEL CASE AND TUBE, A STAINLESS STEEL BALL VALVE, PRESSURE SNUBBERS, AND A SCALE RANGE AS INDICATED. GAUGE SHALL BE LIQUID-FILLED WITH GLYCERIN OR SILICONE.

EQUIPMENT:

FUEL POLISHING UNIT
NEMA 4 RATED ENCLOSURE WITH HINGED DOORS AND HANDLE WITH KEYED LOCK. MANUAL AIR PURGE VALVE, LEAK SENSOR WITH ALARM, WATER SENSOR AND COALESCING FILTER. BASIS OF DESIGN SHALL BE RCI TECHNOLOGIES FRS-6



ROANOKE, VA

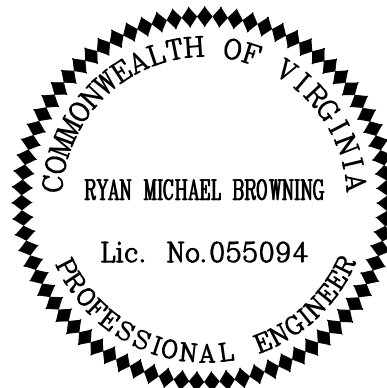
MECHANICAL LEGEND AND ABBREVIATIONS

project	contract
---------	----------

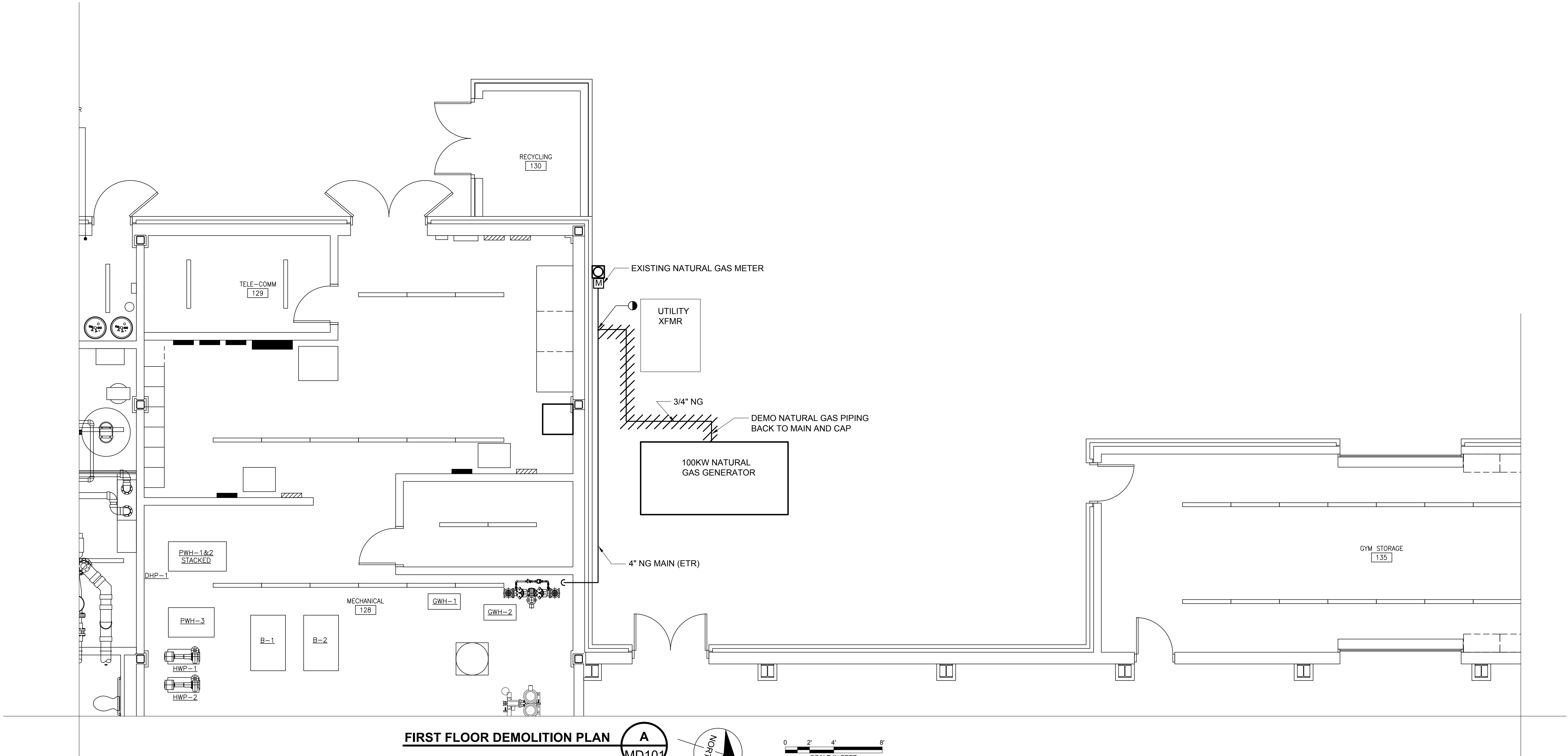
drawing _____ rev. _____

M100 —

sheet 2 of 9 sheet

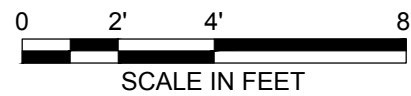
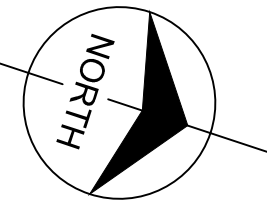
file

COPYRIGHT © 2017 BURNS & MCDONNELL ENGINEERING COMPANY, INC.



FIRST FLOOR DEMOLITION PLAN

A
MD101



GENERAL NOTES

1. ALL EQUIPMENT IS EXISTING TO REMAIN UNLESS OTHERWISE NOTED.
2. REFER TO DRAWING M001 FOR MECHANICAL LEGEND, ABBREVIATIONS AND NOTES.

no.	date	by	ckd	description
09/07/17	RMB	MAS		ISSUED FOR CONSTRUCTION



119 NORFOLK AVE SW, SUITE 100
ROANOKE, VA 24011
540-759-5100

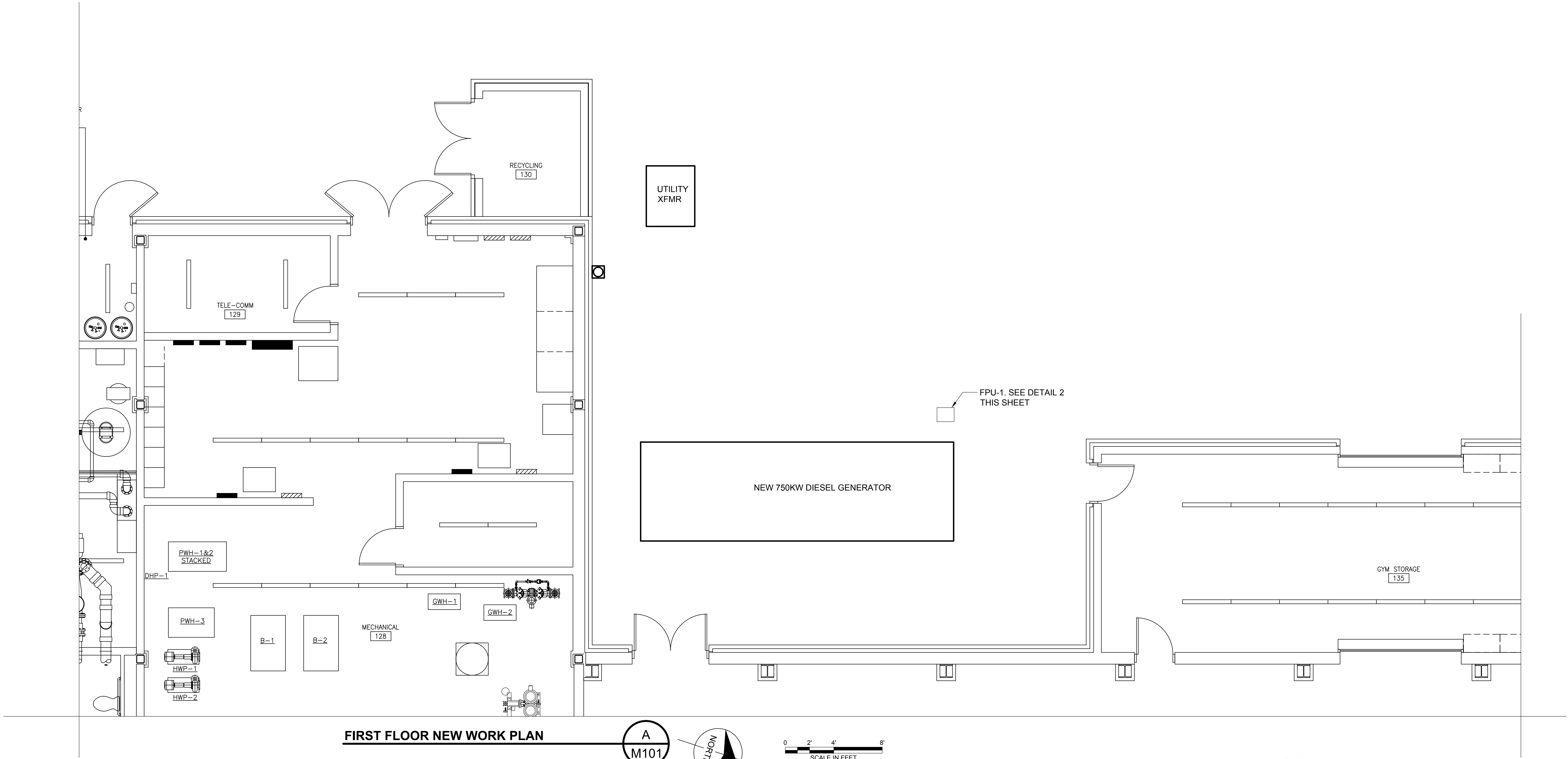
date	09/07/17	detailed	JRR
designed	RMB	checked	MAS

ROANOKE, VA

GENERATOR REPLACEMENT PROJECT #1
MECHANICAL DEMOLITION PLAN

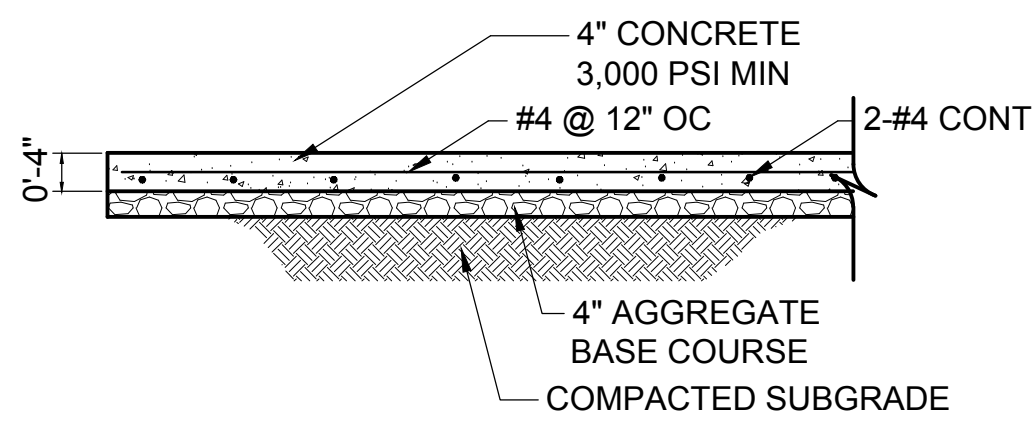
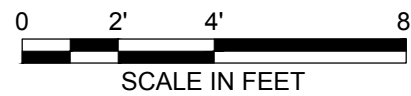
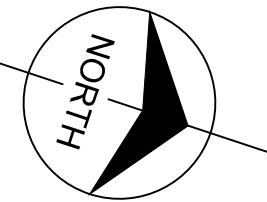
project	100048	contract	
drawing	MD101	rev.	0
sheet	3	of	9
file		sheets	





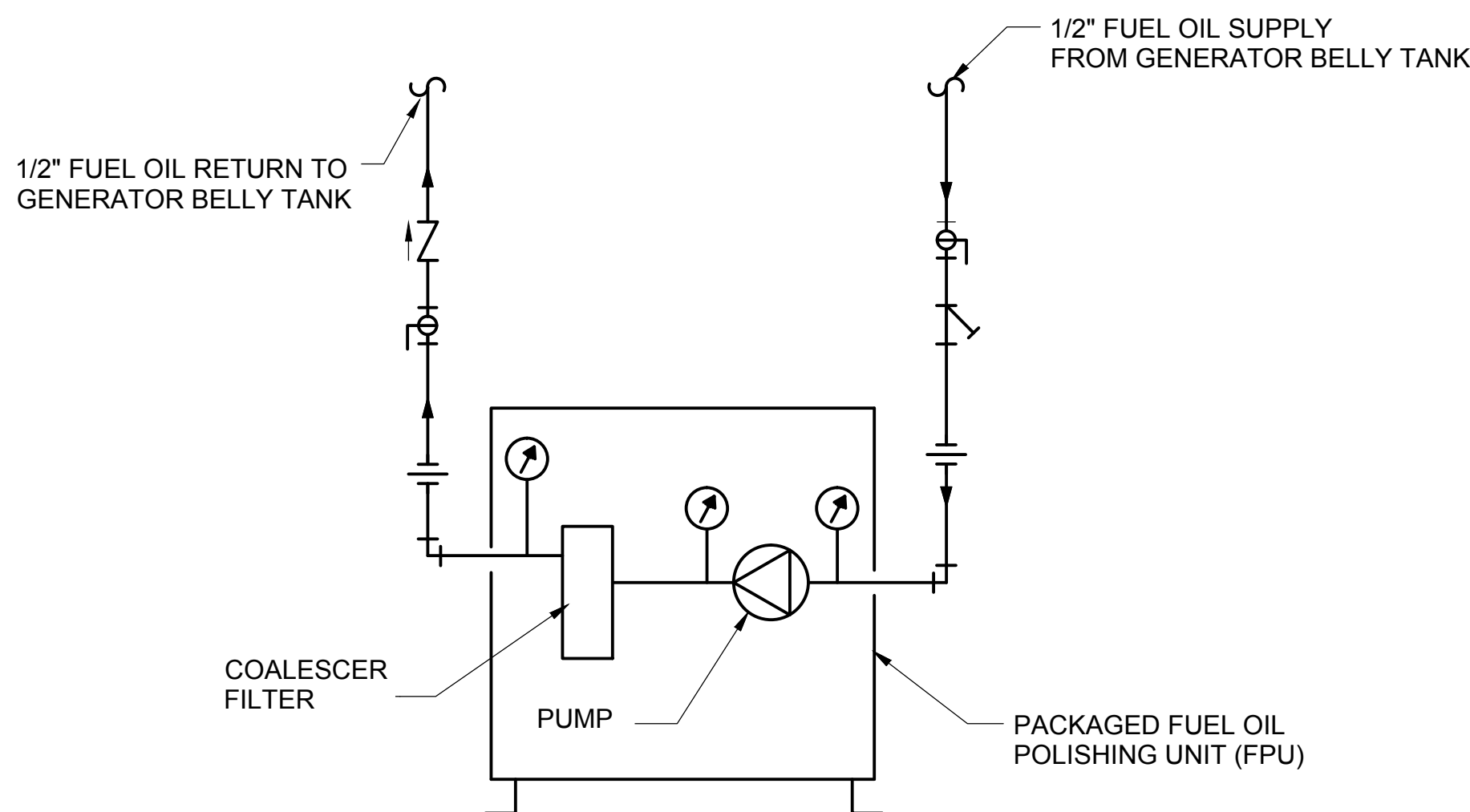
FIRST FLOOR NEW WORK PLAN

A
M101



NEW FUEL OIL POLISHING UNIT CONCRETE EQUIPMENT PAD DETAIL

SCALE: NOT TO SCALE



NEW FUEL POLISHING UNIT DETAIL (FPU)

SCALE: NOT TO SCALE

FUEL OIL POLISHING UNIT SCHEDULE

MARK	DESCRIPTION	TYPE	CAPACITY (GPM)	MOTOR HP	VOLATAGE	PHASE	INLET CONNECTION	OUTLET CONNECTION	SUCTION CAPACITY	REMARKS
FPU-1	FUEL OIL POLISHING UNIT	SIMPLEX	6	1/3	120	1	1/2	1/2	20 FEET VERTICAL	NEMA 4 ENCLOSURE

GENERAL NOTES

- ALL EQUIPMENT IS EXISTING TO REMAIN UNLESS OTHERWISE NOTED.
- REFER TO DRAWING M001 FOR MECHANICAL LEGEND, ABBREVIATIONS AND NOTES.

no.	date	by	ckd	description
09/07/17	RMB	MAS		ISSUED FOR CONSTRUCTION



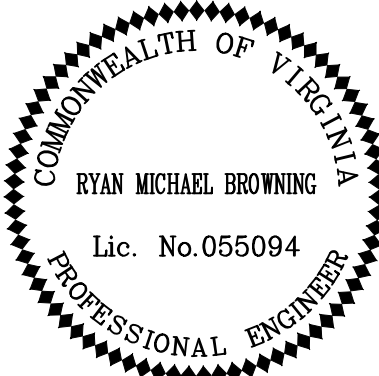
119 NORFOLK AVE SW, SUITE 100
ROANOKE, VA 24011
540-759-5100

date	09/07/17	detailed	JRR
designed	RMB	checked	MAS

ROANOKE, VA

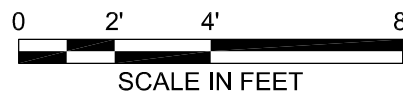
GENERATOR REPLACEMENT PROJECT #1
MECHANICAL NEW WORK PLAN

project	100048	contract	
drawing		rev.	
sheet	4	of	9
file			



A. ALL EQUIPMENT IS EXISTING TO REMAIN UNLESS OTHERWISE NOTED.

1. REMOVE EXISTING GENERATOR. HAND OVER TO OWNER. REFER TO SHEET ED601 FOR DEMOLITION ONE-LINE DIAGRAM FOR MORE INFORMATION. REFER TO SHEET MD101 FOR NATURAL GAS LINE DISCONNECTION.
2. DISCONNECT EXISTING FIRE PUMP ATS FROM GENERATOR PER DEMOLITION ONE-LINE DIAGRAM ON SHEET ED601.
3. DISCONNECT EXISTING UTILITY TRANSFORMER FROM MAIN SWITCHBOARD PER ONE-LINE DIAGRAM ON SHEET ED601. COORDINATE WITH AEP AND OWNER PRIOR TO CONSTRUCTION.
4. DISCONNECT EXISTING UTILITY METER FROM CURRENT TRANSFORMERS IN THE MAIN SWITCHBOARD. COORDINATE WITH AEP PRIOR TO CONSTRUCTION.
5. REMOVE EXISTING ATS. HAND OVER TO OWNER. REFER TO SHEET ED601 FOR DEMOLITION ONE-LINE DIAGRAM.



119 NORFOLK AVE SW, SUITE 100
ROANOKE, VA 24011
540-759-5100

ROANOKE, VA

GENERATOR REPLACEMENT PROJECT #1 DEMOLITION PLAN

drawing **ED101** - rev. **0**

sheet 6	of 9	sheets
file ED101.dwg		



COMMONWEALTH OF VIRGINIA
 KEITH M. SARVER
 Lic. No. 36283
 PROFESSIONAL ENGINEER

A. ALL EQUIPMENT IS EXISTING TO REMAIN UNLESS OTHERWISE NOTED.

1. PROVIDE A 750KW DIESEL GENERATOR IN A SOUND ATTENUATING WEATHERPROOF ENCLOSURE WITH SUB-BASE FUEL TANK. REFER TO SPECIFICATIONS ON SHEET E001 FOR MORE INFORMATION. REFER TO SHEET E601 FOR ONE-LINE DIAGRAM. DEMO EXISTING CONCRETE PAD. PROVIDE CONCRETE PAD 4" DEEP AND A MINIMUM OF 4' BEYOND GENERATOR BASE ON ALL SIDES.
2. RECONNECT EXISTING FIRE PUMP ATS PER ONE-LINE DIAGRAM ON SHEET E601.
3. RECONNECT EXISTING UTILITY TRANSFORMER PER ONE-LINE DIAGRAM ON SHEET E601. REMOVE CONDUCTORS, ABANDON CONDUIT IN PLACE. COORDINATE WITH AEP PRIOR TO CONSTRUCTION.
4. RECONNECT EXISTING UTILITY METER TO NEW LOCATION OF CURRENT TRANSFORMER AT THE ATS. COORDINATE WITH AEP PRIOR TO CONSTRUCTION.
5. PROVIDE LOCKABLE ENTRANCE RATED ATS IN LOCKABLE NEMA 3R ENCLOSURE. REFER TO SPECIFICATIONS ON SHEET E001 FOR MORE INFORMATION. REFER TO SHEET E601 FOR ONE-LINE DIAGRAM. PROVIDE CONCRETE PAD 4" DEEP AND A MINIMUM OF 4' BEYOND ATS BASE ON ALL SIDES.

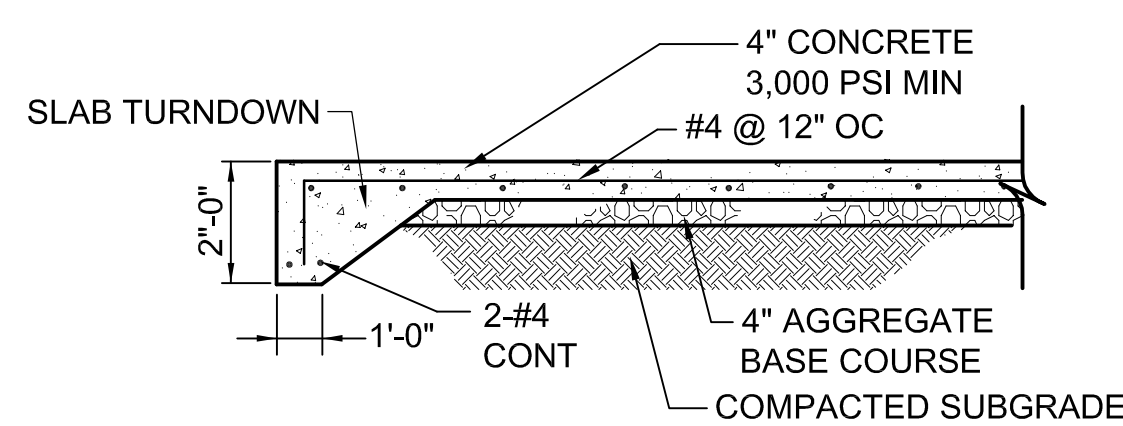


Diagram illustrating the cross-section of a trench. The trench is filled with backfill material, which is labeled "BACKFILL TRENCH". The backfill is composed of a layer of "UNDISTURBED SOIL" (indicated by a cross-hatch pattern) and a layer of "GRADE" (indicated by a solid line). The backfill is placed "SLOPE AS REQUIRED TO PROVIDE SAFE WORKING CONDITIONS IN DUCT BANK TRENCH". The backfill is shown in a trench that is "8" MAX., 4" MIN. EACH WAY".

1. DUCT BANKS MAY BE EARTH FORMED WITH UNDISTURBED EARTH PROVIDED THE EARTH WILL STAND TO A NEAR VERTICAL SLOPE. IF TRENCH IS OVER-EXCAVATED, COMPACT AS SPECIFIED.
2. REFER TO ONE-LINE DIAGRAM FOR NUMBER AND SIZE OF CONDUIT.
3. TIE DOWN CONDUITS AS REQUIRED TO PREVENT THE CONDUIT FROM FLOATING DURING CONCRETE PLACEMENT.
4. CONDUIT SPACING TO BE 3 INCHES.
5. ALL DUCT BANKS ARE TO BE ENCLOSED IN CONCRETE AND SHALL BE SMOOTH FORMED A MINIMUM OF 3'-0" FROM TOP OF STUB UPS.

TYPICAL DUCT BANK TRENCH SECTION DETAIL



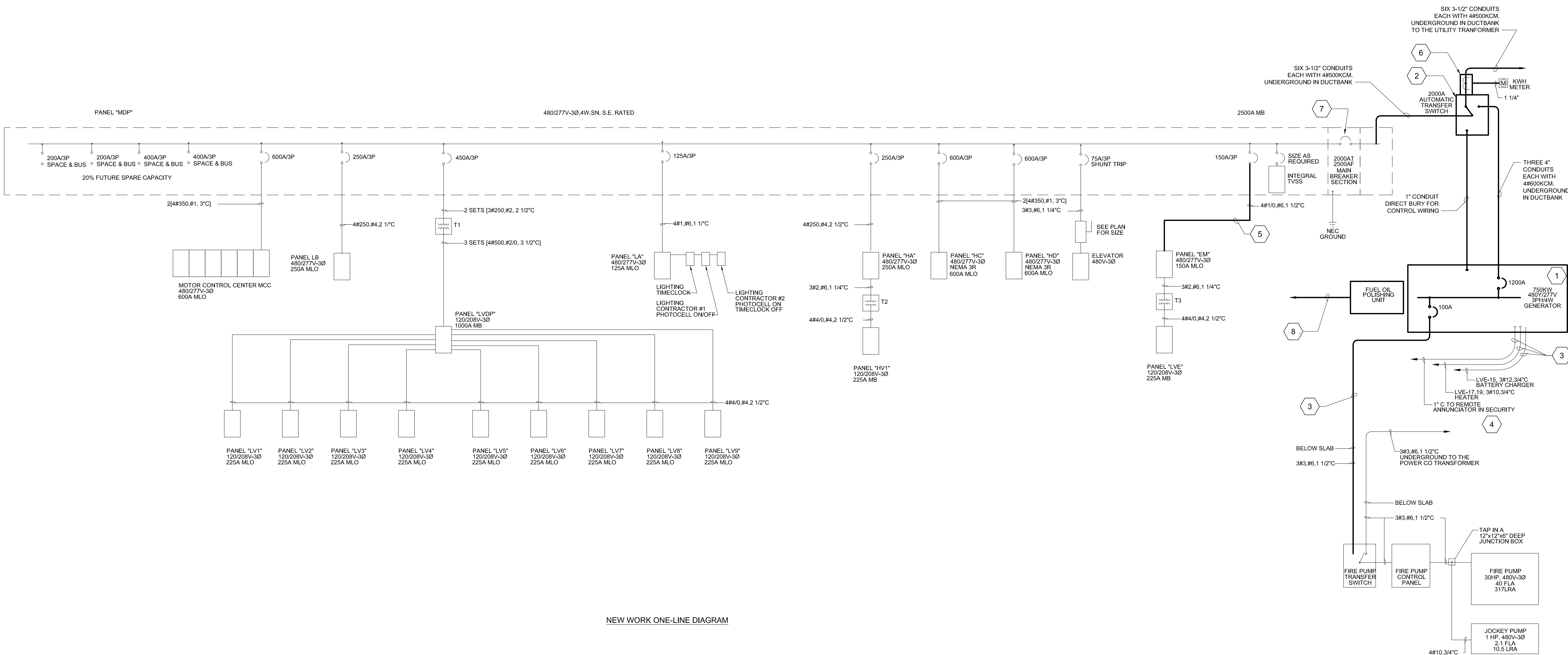
ROANOKE, VA

E101 — 0

sheet 7 of 9 sheets
file E101.dwg



Millimeters
Scale For Macdraming
Inches



NEW WORK ONE-LINE DIAGRAM

GENERAL NOTES

- A. ALL COMPONENTS ARE EXISTING TO REMAIN UNLESS OTHERWISE NOTED.

KEYED NOTES:

1. PROVIDE NEW GENERATOR. REFER TO SHEET E001 AND E101 FOR MORE INFORMATION. PROVIDE EQUIPMENT GROUNDING PER NEC. DO NOT BOND THE NEUTRAL TO GROUND AT THE GENERATOR.
2. PROVIDE NEW SERVICE ENTRANCE RATED ATS. THE ATS SHALL BE 3 POLE WITH SOLID NEUTRAL AND THE NEUTRAL IS BONDED TO THE GROUND AT THE SWITCHBOARD. REFER TO SHEET E001 AND E101 FOR MORE INFORMATION.
3. RECONNECT EXISTING CIRCUIT TO NEW GENERATOR. IF SLACK IN EXISTING CABLE IS INSUFFICIENT, REMOVE CABLE AND REPLACE WITH NEW SO THAT THERE ARE NO SPLICES IN THE CIRCUIT.
4. PROVIDE NEW REMOTE ANNUNCIATOR. MOUNT IN SECURITY ROOM IN SAME LOCATION AS EXISTING.
5. PROVIDE NEW WIRE AND CONDUIT AND RECONNECT PANEL TO EXISTING SWITCHBOARD CIRCUIT BREAKER.
6. PROVIDE NEW OR RELOCATE EXISTING CURRENT TRANSFORMERS, LOCATED IN THE EXISTING SWITCHBOARD. MOUNT EITHER WITHIN THE ATS ENCLOSURE OR EXTERNAL IN A NEMA 3R ENCLOSURE. CONNECT TO THE INCOMING UTILITY SIDE OF THE ATS. RECONNECT EXISTING METER TO THE CURRENT TRANSFORMERS.
7. ADJUST SETTING OF BREAKER TO 2000 AMP TRIP.
8. CONNECT FUEL OIL POLISHING UNIT TO EXISTING 20A, 1-POLE SPARE CIRCUIT BREAKER IN PANEL LVE WITH 2#12, 1#12 GROUND IN 1" CONDUIT, DIRECT BURIED.

no.	date	by	ckd	description
09/07/17	KMS	JMR	ISSUED FOR CONSTRUCTION	

**BURNS
MCDONNELL**
119 NORFOLK AVE SW, SUITE 100
ROANOKE, VA 24011
540-759-5100

date	09/07/17	detailed	JCS
designed	KMS	checked	JMR

GENERATOR REPLACEMENT PROJECT #1
NEW WORK ONE-LINE DIAGRAM

project	100048	contract	
drawing	E601	rev.	0
sheet	9	of	9
file	E601.dwg	sheets	

